

THETFORD ENDURANCE

Saturday 16th August 2025
Rushford Estate, Rushford, Thetford, IP24 2SF
What3Words: guardian.speedily.diverting

Welcome to Thetford Endurance! Launching our new event for the first time and we are happy to be hosting FEI classes, CER classes, Graded Rides and Pleasure Rides.

You will find all of the information required below and we hope you have a wonderful ride!

Emergency Numbers

Lauren Hirst: 07734 944857
Anna Bridges: 07572 543538
Philip Hirst: 07979 110134

Venue & Directions

What3Words to Venue: **guardian.speedily.diverting**

Access to the venue is from a country lane just off of Spalding's Chair Hill between Rushford and Knettishall. Please **do not** use the main entrances to Rushford Hall, the main entrance will be clearly signed. Use the What Three Words to take you to the correct entrance.

On Arrival

All horses are required to be presented to the Veterinary Services Manager (Tom Eaton-Evans) on arrival for identification and temperature checks. Tom will have a designated area for the arrival biosecurity checks near to the stables, so please make sure you seek him out and take your horse, along with your thermometer, temperature chart (if you are in a national class) and horse passport. This applies to **all** horses, no matter what class you are competing in.

We are having to be strict on arrival times as all horses (FEI, CER, GER and Pleasure Ride horses included) arriving on site must be checked in by our Veterinary Services Manager Tom Eaton-Evans.

FEI 2 * and 3 * horses:

Must arrive between 0800-1200hrs on Friday 15th August

FEI 1 * horses:

Must arrive between 0800-1800hrs on Friday 15th August or from 0500hrs on Saturday 16th August

National Horses (CER, GER and Pleasure Ride):

Must arrive between 1200-1800hrs on Friday 15th August or from 0500hrs on Saturday 16th August

Please note we will have to turn away any horses arriving outside of these windows as we will not have any check-in services available. Under no circumstances can any horse arrive after 1800hrs on Friday 15th August.

Water

There is water available at the venue. We have big black water tubs in the vet gate available for everyone to use. Please do not let your horses drink directly from them. However, please bring your own water where possible to avoid any queues! We will also have a water source near the stabling area.

Muck Disposal

There will be skips available at the venue, please ensure you put **all** muck and old feed into them, clear up any muck in the corraling field (walled garden) and from your stables. We are hugely grateful to Rushford Estate for allowing us to use their land and we would like to respect it as much as possible by keeping everything clean.

Parking

Parking for trailers and horseboxes is in the first field as you come through the main entrance - parking along the right hand treeline is for overnight parking and camping. Parking up the top of the field near to the entrance to the vetgate field is for day parking. There will be crew parking by the vet gate, please only park there if you have a horse using the vet gate. We will endeavour to have a parking steward to guide you on arrival but if this is not possible, please park sensibly.

Corraling & Stabling

Corraling is in the walled garden which is located by the hold area / secretary's tent. If you have booked and paid for corraling, you will be given a corral card when you check in and you will need to show this at the entrance to the walled garden when you take your horse in. Therefore, if you are travelling on your own, please check in and collect your paperwork before unloading your horse.

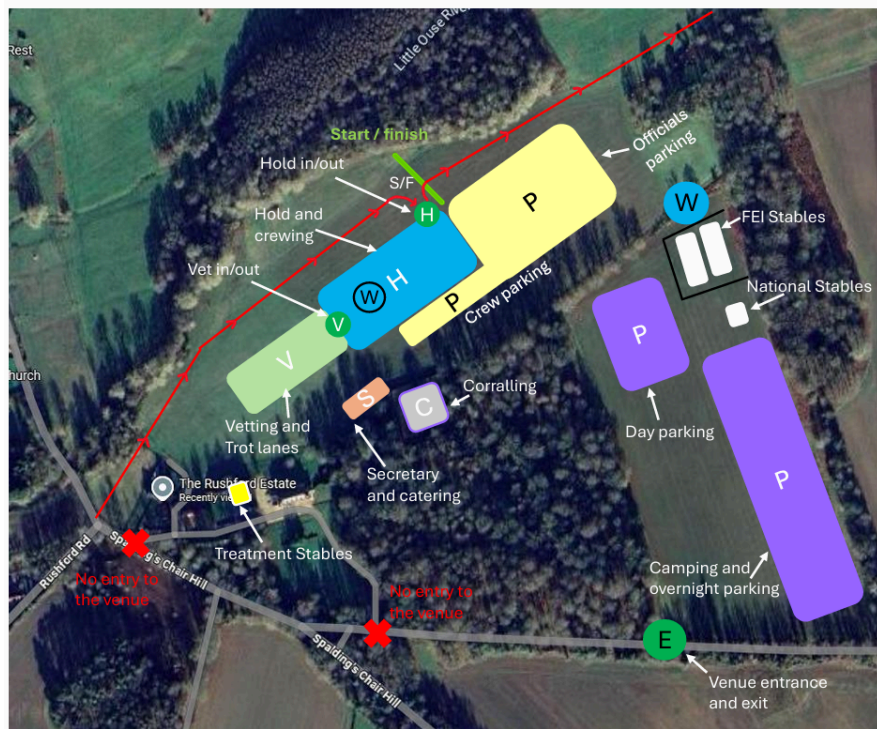
Please ensure you complete your corraling card with horse name, your name (or person responsible) and telephone number so that you can be contacted in an emergency. You must have a designated person staying on site if your horse is corralled. Corrals **MUST** be left as you found them, please remove all muck and old feed/hay.

National and FEI stables are located in the bottom right hand corner of the first field as you come through the main entrance. Please check with the secretary for your stable allocation. All stables must have a stable card attached, i.e. you must leave your name and telephone number attached to your stable so that you can be contacted in an emergency. You must have a designated person staying on site if your horse is stabled.

Deposits

Corrals require a £10 deposit and stables (national and FEI) a £20 deposit. This money is payable upon check-in to the secretary on arrival and will be refunded to you as long as the corrals are free of all droppings and feed/hay and the stables are completely clear of muck, hay, feed and bedding.

Venue Layout



Thetford Endurance Venue Plan 2025

The red lines indicate where horses will be on the course.

W There is a water point by the stables and in the vet gate. Please bring your own water where possible. We do not have mains water.

P Crew are invited to park in front of the hold and crewing area if your horse is in there. If you do not have a horse in the hold, please park in the day parking area. Officials, please park down the bottom end to allow as much space for crew cars.

H All competitors start and finish here. Please be mindful of horses entering/exiting the hold area

— ★ —
THETFORD ENDURANCE

Attire

Please can we remind everyone that this is an FEI 3* event, and as such smart attire is required as per the FEI rules (and these apply to ALL attendees). Jeans are not permitted during the pre-ride vetting on Friday and please also remember that at all stages of the event, anyone who will be with the horse during its presentation to the vet (whether in the FEI, GER or pleasure ride class) must **NOT wear shorts**. The Ground Jury are within their rights to ask you to leave the vet lanes if you are wearing shorts. Thank you. Don't forget, we have a Best Turned Out prize available too, so surely this is the perfect excuse to dig out something fancy and enjoy the moment with you and your horse!

Venue & Route Etiquette

Please kindly ensure you abide by the following:

- Please do not leave horses tied to your trailer/horsebox unattended.
- Please keep dogs on leads and do not leave them unattended in vehicles (including trailers) **at any point**.
- Please do not muck your trailer/horsebox out into the venue field. There are skips available for all muck.
- Please ensure your crew park considerably at the on course crew points and do not speed on the country lanes.
- Please do not ride on the crops.
- Please could you ensure that you clean up after your horse in the parking area as well and do not tip out old feed/hay.
- We as the OC are responsible for making sure the venue is left clean and tidy, so we would really appreciate your help and support with this, so we do not find ourselves poo picking at 2000hrs on Sunday night, thank you!!

Crewing and Checkpoints

What3words – Venue and Check Points:

Location	Map Key	W3W
Venue	V	///raced.labels.signed
Check Point 1 – Spalding's Chair Hill	1	///fades.replaying.firepower
Check Point 2 – Rushford Road	2	///toddler.indulges.lipstick
Check Point 3 – Snarehill Farm	3	///clearly.breed.loaning
Check Point 4 – A1066 Snarehill Gallops	4	///elections.fried.rated
Check Point 5 – Kilverstone Road (West)	5	///mascot.lighter.decorator
Check Point 6 – Peddar's Way, Brettenham	6	///blows.awards.keyboards
Check Point 7 – Kilverstone Road (East)	7	///smuggled.proceeds.charities

What3words – Crew Points:

Location	Map Key	W3W
Crew Point 1 – Ringers Barn Farm	C1	///sorters.swatting.rational
Crew Point 2 – Snarehill Farm	C2	///clearly.breed.loaning
Crew Point 3 – Shadwell Beaters Hut	C3	///topping.cabbages.cricket

Performance Formula

We are pleased to confirm that all of our GER classes offer prizes for the performance formula placings, with huge thanks to our amazing sponsors detailed below. We do not have the 13kph speed cap on our performance formula classes.

Sponsor & Supporter Contact Details

We are so very grateful to all of our amazing sponsors/supporters. If you are lucky enough to win a prize, please ensure to tag them in any Social Media posts and if you would like to contact them directly to thank them for their support then get in touch with Anna/Lauren and we will pass on the necessary details. Please remember that support from companies like these is such an important element to what we are able to deliver. We really want to make sure they get the thanks and exposure they deserve:

Ride Sponsors

- ★ [Baileys Horse Feeds \(@BaileysHorseFeeds\)](#)
- ★ [Equiverse Pro](#)
- ★ [Zilco \(@ZilcoEurope\)](#)
- ★ [Iceni Group, Endurance GB \(@iceni.endurancegb\)](#)
- ★ [Equine Products UK Ltd \(@equineproductsuk\)](#)
- ★ [JR Endurance](#)

Special Awards

- ★ Best Turned Out sponsored by [Peden Bloodstock \(@pedenbloodstock\)](#)
- ★ Vet's Choice sponsored by [Beth Endurance \(@bethendurance\)](#)
- ★ Best Shod
- ★ Best Barefoot sponsored by [PBH Accounting \(@accountingpbh\)](#)
- ★ OC's Rider Recognition Award

Photographer

Our official photographer is the one and only **Dave** from **David Saunders Photography**.

Website: <https://www.saundersphotography.co.uk/>

Facebook: @davidsaundersphotography

Farrier

Our ride farrier is **Sam Rust**. He will be at the venue Saturday and can also be mobile if anyone loses a shoe on course. Please bring cash.

Tel: 07827 229109

Thetford Endurance Feature Prize Giving and Party!

We will be hosting our feature prize giving (please refer to the noticeboard for timings). Additionally, we are pleased to invite you to our Thetford Endurance party and social, those of you that have attended Lavenham Endurance before will know this is a great evening celebrating our horses and people that have contributed to the day. This will start at approx. 1800hrs. If you are planning to come along, please bring a chair to rest your feet!

Please remember!

- All entrants (FEI **and** National) must adhere to the FEI bio security requirements (available on our website)
- All entrants (FEI **and** National) please remember to bring a thermometer with you - you will need to take your own horse's temperature on arrival at the venue
- All National arrivals, please remember your temperature charts - these must be handed in to the Veterinary Services Manager on arrival
- Ice will not be available to buy at the venue, please bring your own if desired
- Gazebos are allowed in the hold area - you must ensure they are adequately secured with heavy duty stakes
- Make sure you check the notice board in the secretary's tent for any last minute, unavoidable changes

Helpful Links

Website: www.lavenhamendurance.com

Facebook: @thetfordendurance

Instagram: @lavenhamendurance

WhatsApp Group

We have set up a Public WhatsApp group that you can join by following the link below. This way, you can easily keep up to speed with news, updates and information straight to your phone.

<https://chat.whatsapp.com/FCem4XrUIOLAGMplncsQu8>

We would like to extend our grateful thanks to Rushford and Shadwell Estates for allowing us access to so many amazing tracks for you all to enjoy. So, above all, we wish you a happy and successful time with us here at Thetford Endurance. We really hope you enjoy this beautiful part of the country. Have a wonderful ride!

Lauren, Anna, Philip